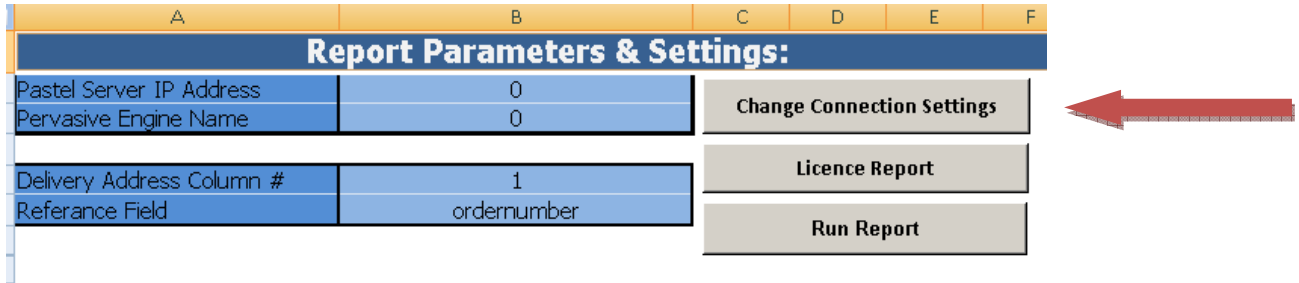
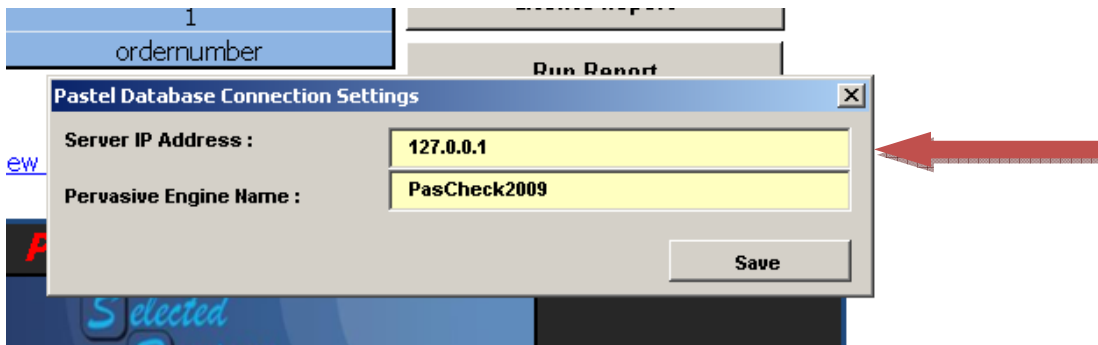


How To Configure Database Connection in PasCheck

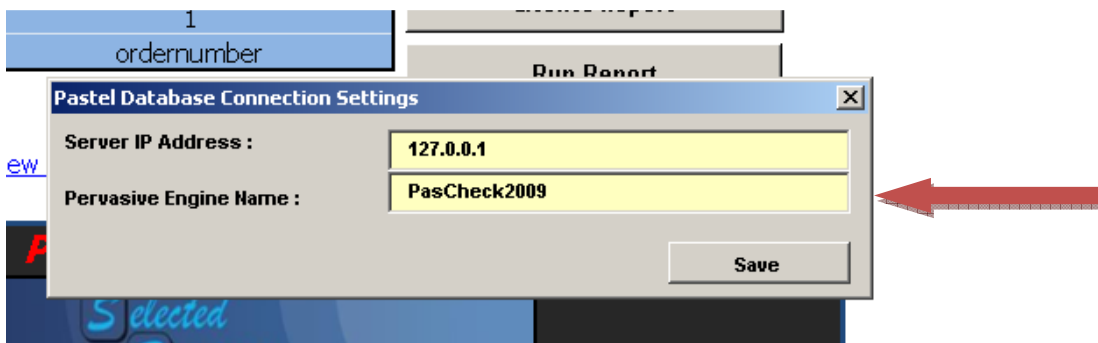
1 – In PasCheck , go to the “START” sheet and click “CHANGE CONNECTION SETTINGS”



2 – In the first box , enter the IP Address of the computer on which the Pervasive Engine ODBC has been created. If it has been created on your local computer, then you can use the address 127.0.0.1



3 – In the second box, enter the name of the Pervasive Engine ODBC which has been created.



4 – click “SAVE”