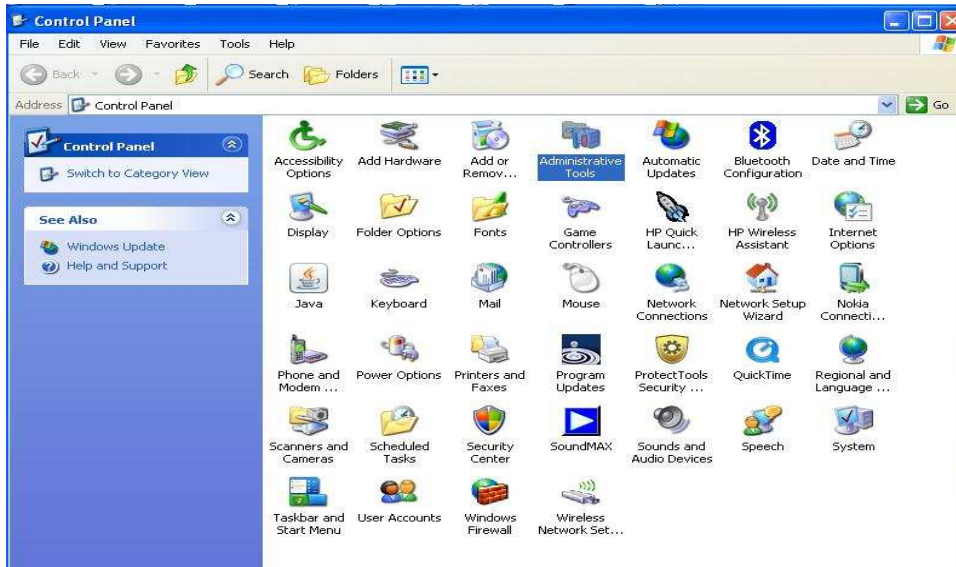


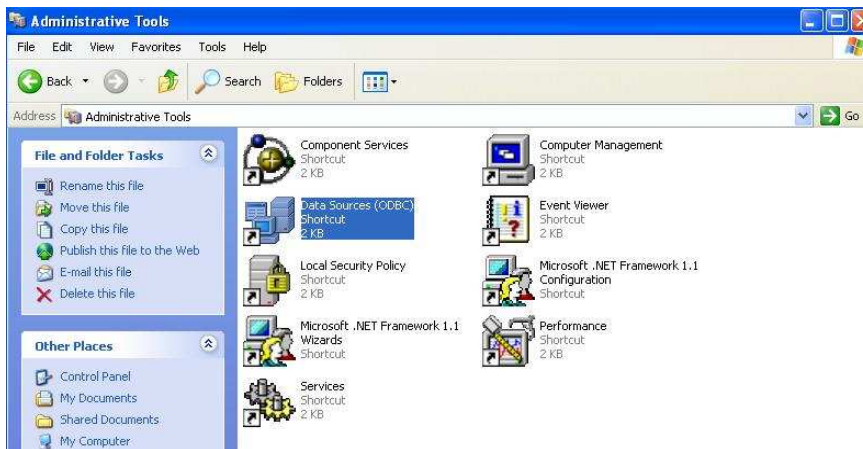
How To Create a Pervasive Engine ODBC Connection To Your Pastel Database

1 – From your local computer, go to 'START' – 'CONTROL PANEL'

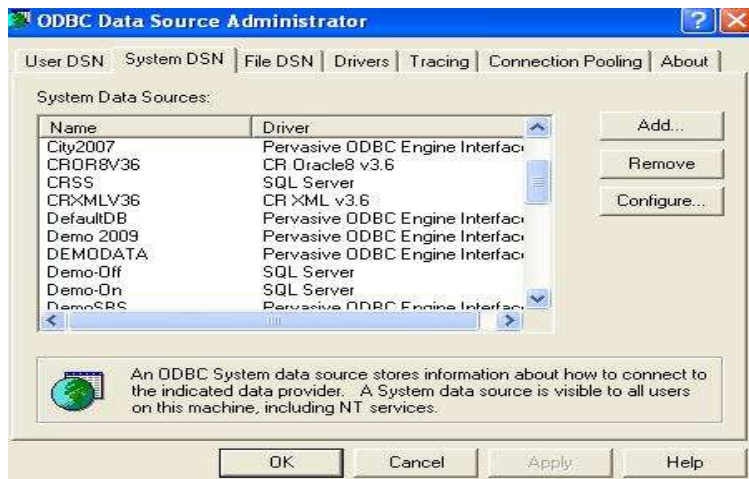
2 – click on 'ADMINISTRATIVE TOOLS'



3 – click on 'DATA SOURCES ODBC'



4 – click on tab 'SYSTEM DSN', then click 'ADD'



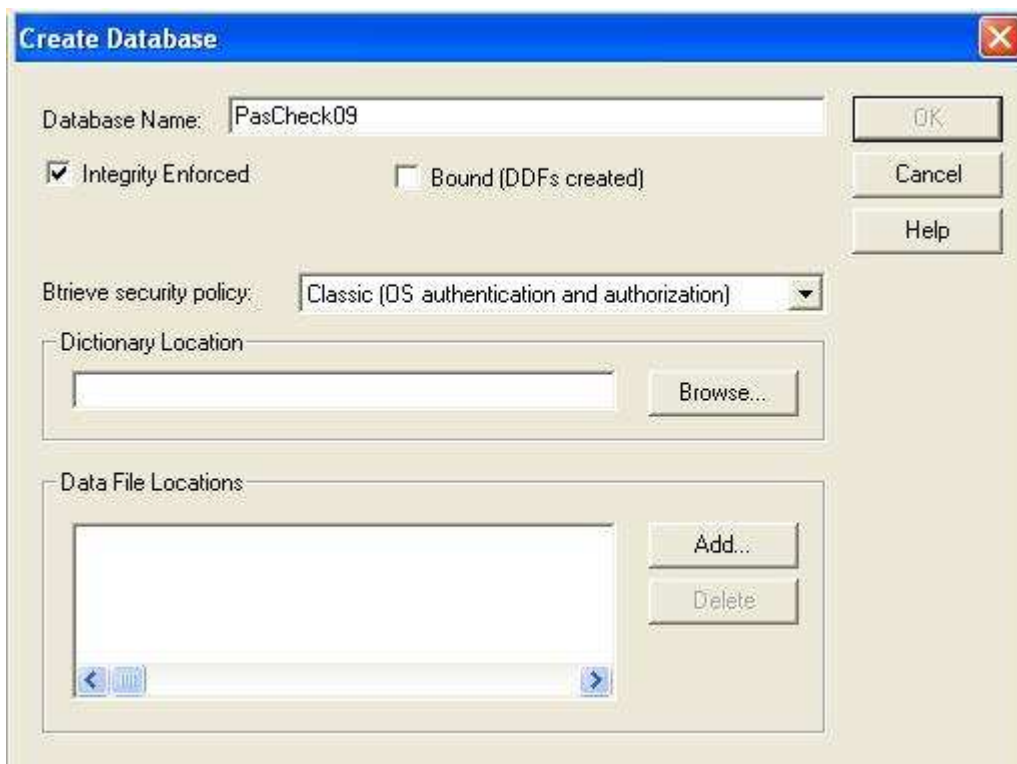
5 – choose 'PERVASIVE ODBC ENGINE DRIVER' and click 'FINISH'



6 –under “DATA SOURCE NAME” name the connection eg. “PasCheck09”, then click “CREATE”



7 – under “DATABASE NAME” enter the same name that you used in the previous screen eg.”PasCheck09”, then click “BROWSE”



8 – browse to the location of your current Pastel data directory (usually contained inside one of your mapped drives), then click “OK”



9 – click “OK”, then click “Test”. If successful, click “OK” and exit back to desktop.

